



The Bartimaeus Institute 2010

in the central coast village of Oak View, CA

February 22-26, 2010

"Ecojustice, Sabbath Economics and Luke's Gospel"
with Ched Myers and friends
Co-Sponsored by the Sisters of Notre Dame de Namur

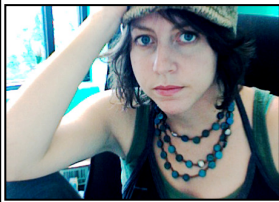
The Institute offers intensive study of scripture and social justice. We will commemorate the fifth anniversary of the martyrdom of Notre Dame Sister **Dorothy Stang** (*right*) in Brazil (see www.sndohio.org/dotstang.htm). With a focus on how to integrate Creation spirituality with liberation ecojustice, we will study lections from Luke related to economic and environmental justice.

"Dorothy often spoke about Creation spirituality and liberation ecology. I recommend this program with all my heart. Dorothy will be in your midst."
--David Stang,
Dorothy's brother.



Special guests include (below, l to r):

- o Village musician: **Jay Beck** of **Psalters** (www.psalters.org)
- o Village artist: **Meg Lemieur** of Paper Stampede (<http://paperstampede.com>)
- o **Brad Monsma** of **Los Padres Forest Watch** (see interview at: www.metacafe.com/watch/1303286/the_sespe_wilderness_part_2/)
- o **Sandy Lejeune** of Santa Barbara **Surfrider Foundation** (<http://www.surfrider.org/>)
- o **The Abundant Table Farm Project**, Oxnard (<http://abundanttableorganicfarming.blogspot.com/>)
- o **Nopalitos Native Nursery**, www.nopalitonursery.com



The Institute runs from Monday 5:00 pm thru Friday noon. Registration: Commuter Fee: \$400; residential: \$575 (double occupancy), \$685 (single occupancy). Academic credit and limited scholarships are available (under 40 discount!). Space is limited to 30 per Institute. Register thru our website or contact us at: inquiries@bcm-net.org or 323-449-5170. www.bcm-net.org